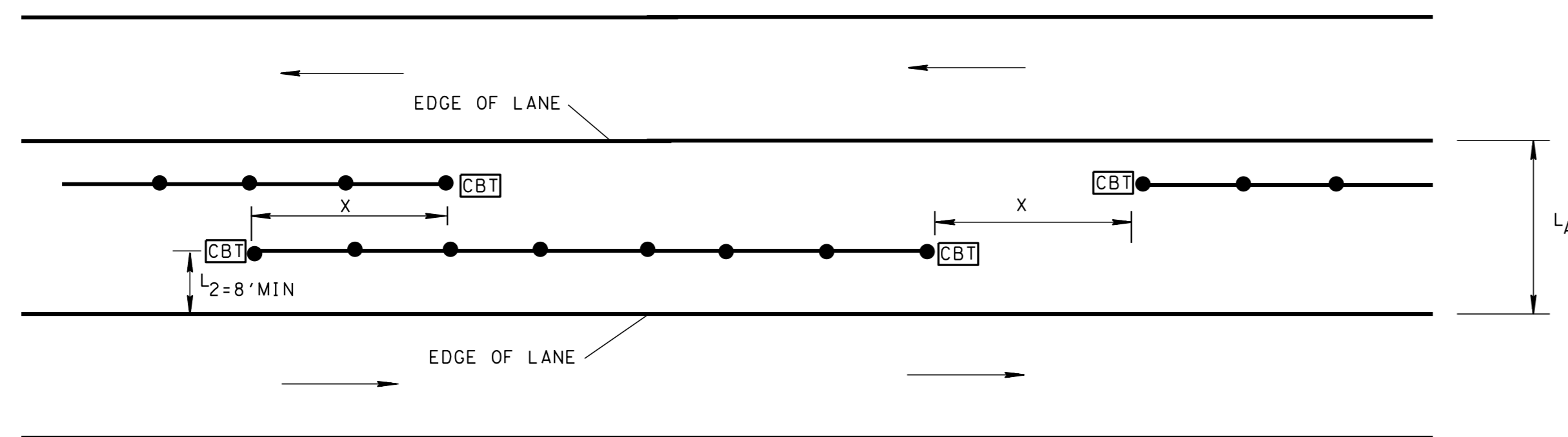


TYPICAL PLACEMENT LOCATIONS FOR CABLE MEDIAN BARRIER
(MINIMUM WIDTH SHOWN ⓑ)

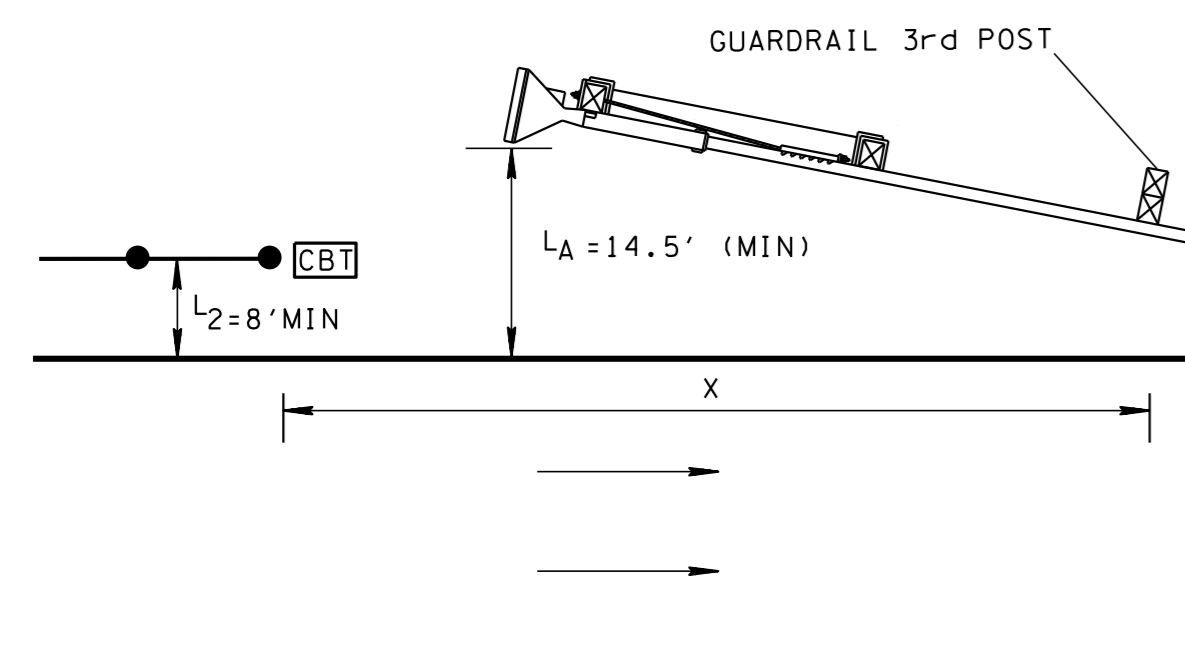
MINIMUM CRASH TEST LEVEL	
SYSTEM	NCHRP OR MASH TEST LEVEL
CABLE BARRIER ≤ 6:1	TL-4
CABLE BARRIER > 6:1 TO ≤ 4:1	TL-3 *
CABLE BARRIER TERMINAL	TL-3

* TL-4 SYSTEMS ON STEEPER SLOPES THAN 6:1 PERFORM ONLY TO TL-3.

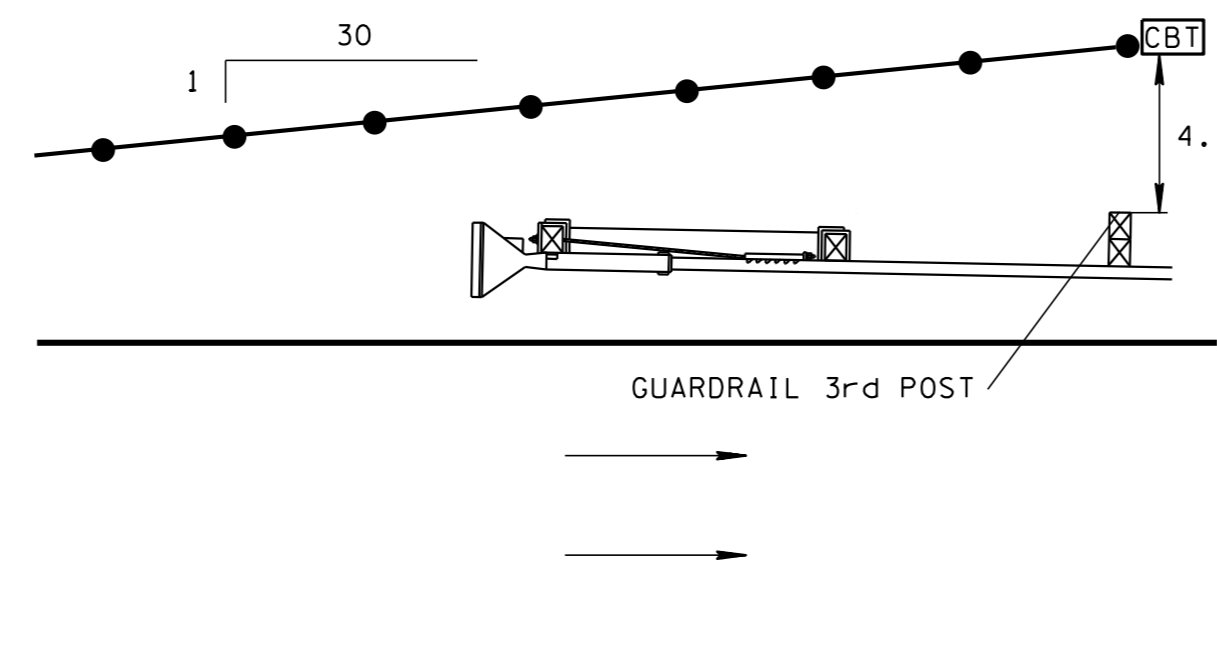


DETAIL A
CABLE BARRIER MEDIAN SIDE TRANSITION

$$X \text{ (FT)} = \frac{L_A - L_2}{(L_A / 360)}$$



DETAIL B-1
CABLE TERMINAL AT OVERPASS/UNDERPASS
APPROACH



DETAIL B-2
CABLE GUARDRAIL TERMINAL
AT TANGENTIAL GUARDRAIL TERMINAL

LEGEND

- CABLE BARRIER
- CABLE BARRIER TERMINAL

GENERAL NOTES

- (A) MEDIAN BARRIERS SHOULD BE CONSIDERED FOR DEPRESSED MEDIANS THAT ARE: LESS THAN 50 FEET WIDE, HAVE AVERAGE GREATER THAN 20,000 VEH/DAY AT LOCATION WITH A HISTORY OF MEDIAN CROSSOVER CRASHES OR WHERE ENGINEERING JUDGEMENT DICTATES.
- (B) CABLE BARRIER SHALL ONLY BE USED ON MEDIANS WIDER THAN 32 FEET.
- (C) CABLE BARRIERS TERMINALS VARY IN LENGTH BY MANUFACTURER AND DO NOT PROVIDE REDIRECTIVE PROTECTION. THE FIRST POST OF CABLE BARRIER SHOWN ON PLANS REPRESENTS THE END OF THE TERMINAL SECTION AND THE BEGINNING OF FUNCTIONAL CABLE BARRIER.
- (D) CABLE BARRIERS SHOULD ONLY BE INSTALLED WITH FORESLOPES 6:1 OR FLATTER IF POSSIBLE, IF NOT POSSIBLE THE FORESLOPE SHALL NOT BE STEEPER THAN 4:1.
- (E) CABLE BARRIERS SHALL NOT BE INSTALLED BETWEEN 1 FEET AND 8 FEET FROM THE EDGE OF ROUNDED DITCH.
- (F) IF CABLE BARRIER IS INSTALLED ON SLOPES GREATER THAN 6:1 CABLE GUARD RAIL SHALL NOT BE PLACED MORE THAN 4 FEET FROM SLOPE BREAK.
- (G) MAXIMUM RUN LENGTH IS 5000 FT.
- (H) INSTALL CABLE BARRIERS TO MANUFACTURER'S SPECIFICATION.
- (I) CABLE BARRIER SHALL NOT BE USED TO SHIELD FIXED OBJECTS. CABLE BARRIER RUNS SHALL BE TERMINATED AND GUARDRAIL OR RIGID BARRIER SHALL BE INSTALLED TO SHIELD FIXED OBJECTS (SEE DETAIL "B").
- (J) CABLE BARRIER SHALL ONLY BE USED IF A MINIMUM OF 10 FEET OF CLEAR ZONE IS AVAILABLE BEHIND THE BARRIER TO ALLOW FOR DEFLECTION.
- (K) CABLE BARRIER SHALL BE PLACED ON THE INSIDE CURVE IF POSSIBLE.
- (L) IF CABLE BARRIER IS PLACED ON THE OUTSIDE CURVE, MINIMUM OFFSET FROM EDGE OF TRAVEL LANE SHALL BE 10 FEET AND POST SPACING SHALL BE ADJUSTED TO PREVENT DEFLECTION INTO THE TRAVELED WAY BY A BACKSIDE IMPACT. CONTACT CABLE BARRIER MANUFACTURER FOR DETAILS.
- (M) ONE DELINEATOR SHALL BE POSTED ON AT LEAST ONE OUT OF TWO POSTS IN SEQUENCE. DELINEATORS SHALL CONFORM TO THE MINIMUM SIZE, RETRO-REFLECTIVITY AND COLOR REQUIREMENTS OF SECTION 3F.02 AND 3F.03 OF THE MUTCD. DELINEATORS SHALL BE POSTED AS HIGH AS POSSIBLE ON THE POST. DELINEATOR COST TO BE INCLUDED IN THE COST OF CABLE BARRIER.
- (N) USE DETAIL A AT EMERGENCY MEDIAN CROSS OVER LOCATIONS.
- (O) ONLY HIGH TENSION CABLE BARRIER SYSTEMS ON THE QUALIFIED PRODUCTS LIST MAY BE USED.
- (P) PAY ITEMS FOR CABLE BARRIER WILL BE UNDER THE FOLLOWING ITEM NUMBERS:

705-80.01 LONGITUDINAL CABLE BARRIER PER LF
705-80.18 CABLE BARRIER TERMINAL EACH

MINOR REVISION -- FHWA APPROVAL NOT REQUIRED.

STATE OF TENNESSEE
DEPARTMENT OF TRANSPORTATION

CABLE BARRIER
PLACEMENT